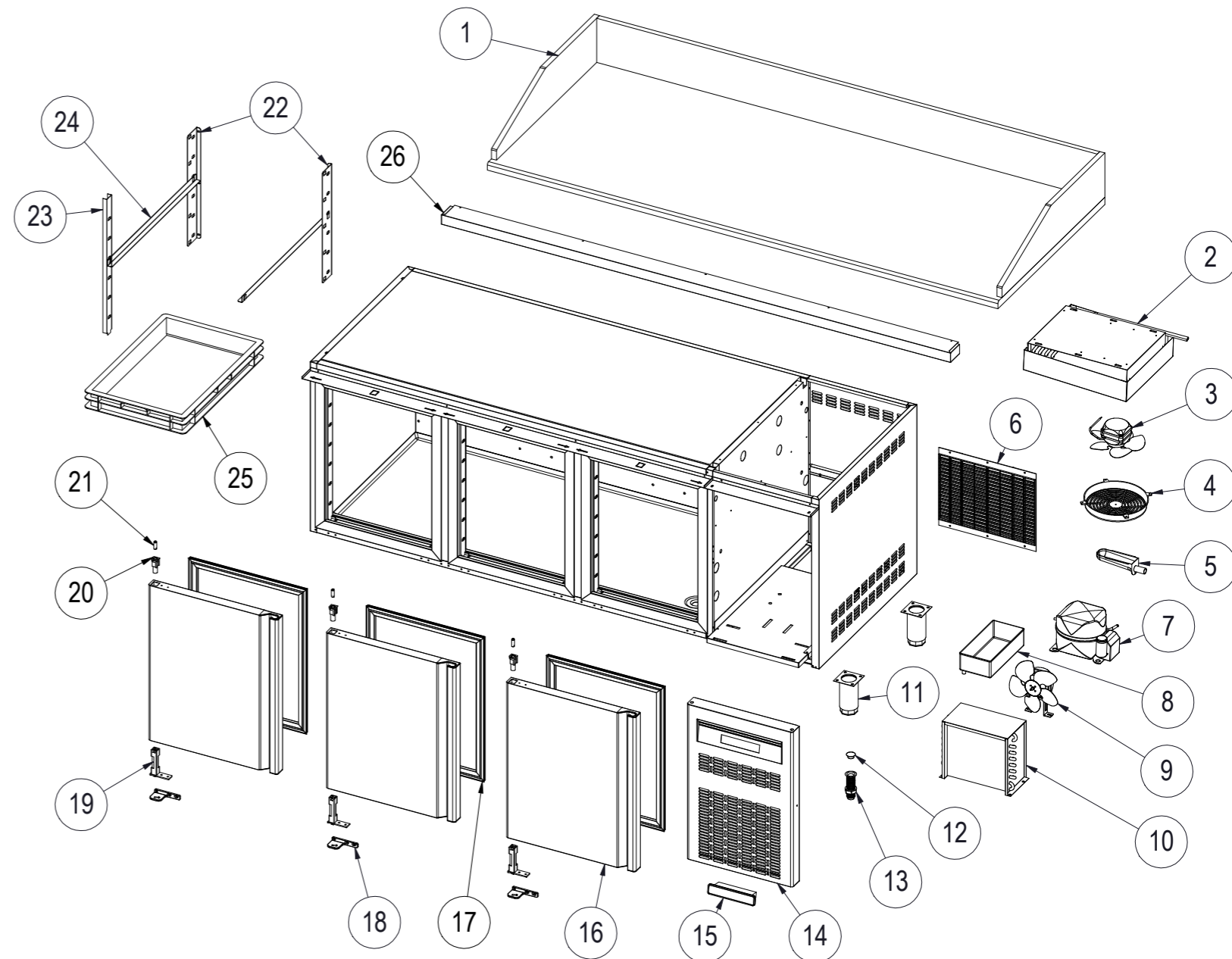


| Nº | DESCRIPCIÓN | DESCRIPTION | MP80-150 | MP80-200 | MP80-250 |
|----|-----------------------------|-------------------------------|------------|------------|------------|
| 1 | ENCIMERA GRANITO | GRANITE WORKTOP | 6031010078 | 6031010079 | 6031010080 |
| | PETO LATERAL GRANITO | SIDE GRANITE UPSTAND | 6031010116 | 6031010116 | 6031010116 |
| | PETO TRASERO GRANITO | REAR GRANITE UPSTAND | 6031010108 | 6031010120 | 6031010118 |
| 2 | EVAPORADOR MP80 | EVAPORATOR MP80 | 6029010159 | 6029010159 | 6029010195 |
| 3 | VENTILADOR EVAPORADOR | EVAPORATOR FAN | 6021050116 | 6021050116 | 6021050116 |
| | ASPA VENT. DEL EVAP. | EVAPORATOR FAN BLADE | 6021050073 | 6021050073 | 6021050073 |
| 4 | REJILLA VENTILADOR | FAN GRILLE | 6003010475 | 6003010475 | 6003010475 |
| 5 | DESAGUE CANALIZADOR | DRAIN CANAL | 6003010184 | 6003010184 | 6003010184 |
| 6 | REJILLA TRASERA MOTOR | REAR VENTILATION GRILLE | 6003010181 | 6003010181 | 6003010181 |
| 7 | COMPRESOR MP80 | COMPRESSOR MP80 | 6021010226 | 6021010226 | 6021010236 |
| 8 | BANDEJA EVAP. AUTOM. | AUTOMATIC EVAP. TRAY | 6003010023 | 6003010023 | 6003010023 |
| 9 | VENTILADOR CONDENSADOR MP80 | CONDENSER FAN MP80 | 6021050119 | 6021050119 | 6021050106 |
| | ASPA VENT. DEL COND. MP80 | CONDENSER FAN BLADE MP80 | 6021050043 | 6021050043 | 6021050080 |
| 10 | CONDENSADOR MP80 | CONDENSER MP80 | 6029020008 | 6029020008 | 6029020002 |
| 11 | PATA REGULABLE | ADJUSTABLE FEET | 6007050017 | 6007050017 | 6007050017 |
| 12 | TAPÓN DESAGUE 3/4 | DRAIN CAP 3/4 | 6003010262 | 6003010262 | 6003010262 |
| 13 | DESAGUE 3/4 | DRAIN TUBE 3/4 | 6003010326 | 6003010326 | 6003010326 |
| 14 | REJILLA CUADRO MANDOS | CONTROL PANEL GRILLE | M177010087 | M177010087 | M177010087 |
| 15 | TERMOSTATO | THERMOSTAT | 6021350114 | 6021350114 | 6021350114 |
| 16 | SONDA | PROBE | 6021350083 | 6021350083 | 6021350083 |
| 17 | PUERTA MP80 | DOOR MP80 | M169010088 | M169010088 | M169010088 |
| 18 | BURLETE | SEAL | 6045010115 | 6045010115 | 6045010115 |
| 19 | SOP. BISAGRA INF. IZQ. | LOWER LEFT HINGE SUPPORT | 6033010098 | 6033010098 | 6033010098 |
| 20 | BISAGRA DE TORSIÓN | TORSION HINGE | 6033010100 | 6033010100 | 6033010100 |
| 21 | CAJA ALOJAMIENTO MUELLE | HINGE PIN SUPPORT | 6003010136 | 6003010136 | 6003010136 |
| 22 | EJE PUERTA | SPLINDE DOOR | 6033090064 | 6033090064 | 6033090064 |
| 23 | CREMALLERA DERECHA | RIGHT INTO SHELF RACK | M109050365 | M109050365 | M109050365 |
| 24 | CREMALLERA IZQUIERDA | LEFT INTO SHELF RACK | M109050365 | M109050365 | M109050365 |
| 25 | CREMALLERA MARCO | FRONT SHELF RACK | M109050364 | M109050364 | M109050364 |
| 26 | JUEGO DE GUÍAS "L" 649mm | SET OF SHELF SLIDES "L" 649mm | 6033050024 | 6033050024 | 6033050024 |
| 27 | CAJA PLÁSTICO | PLASTIC BOX | 6003010079 | 6003010079 | 6003010079 |
| 28 | EMBELLECEDOR FRONTAL S/E | FRONT WHELL TRIM S/E | M109130241 | M109130242 | M109130243 |

Gas R290



| Nº | DESCRIPCIÓN | DESCRIPTION | MR80-150 | MR80-200 | MR80-250 |
|-----|-----------------------------|--------------------------|------------|------------|------------|
| 2* | EVAPORADOR MP80 | EVAPORATOR MP80 | 6029010159 | 6029010159 | 6029010143 |
| 7* | COMPRESOR MP80 | COMPRESSOR MP80 | 6021010003 | 6021010204 | 6021010184 |
| 9* | VENTILADOR CONDENSADOR MP80 | CONDENSER FAN MP80 | 6021050113 | 6021050113 | 6021050106 |
| | ASPA VENT. DEL COND. MP80 | CONDENSER FAN BLADE MP80 | 6021050073 | 6021050073 | 6021050080 |
| 10* | CONDENSADOR MP80 | CONDENSER MP80 | 6029020008 | 6029020008 | 6029020002 |

*Gas opcional R-134a (Optional gas R-134a)

CON EXPOSITOR
EI-1/4-150
EI-1/4-200
EI-1/4-250